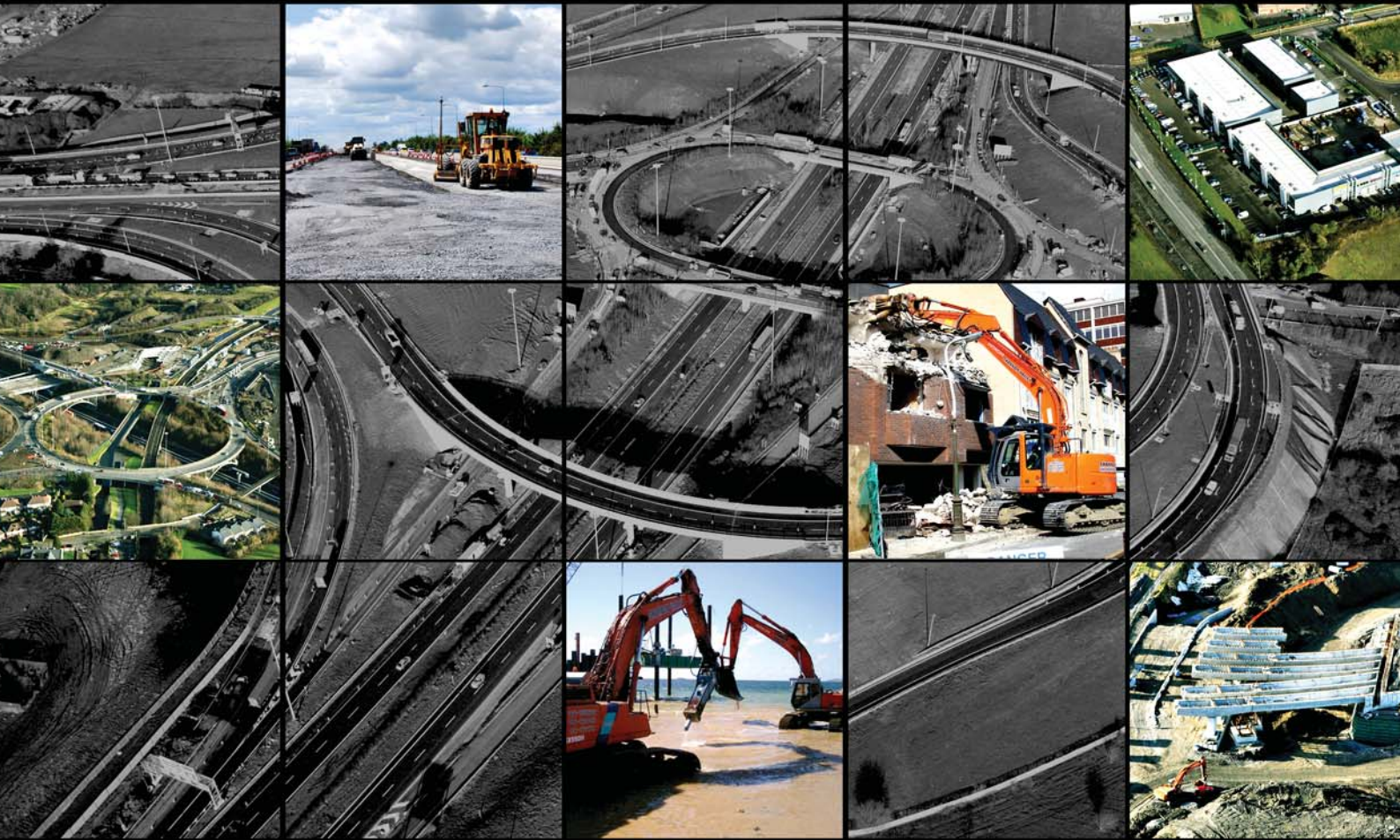


Shannon Valley

SHANNON VALLEY PLANT & CIVIL ENGINEERING COMPANY PROFILE



CONTENTS

Company Introduction	4
Head Office	5
Health & Safety and Environment	6
Plant	7
Clients	8
References	9
Projects	11 - 35
Demolition Profile	36 - 37
Summary	38

COMPANY INTRODUCTION

Our company was established in 1991 as a family business and has since grown to be one of Ireland's largest Civil Engineering contractor's undertaking works ranging up to and in excess of €30m.

Our background since establishment has involved the construction of motorways, regional & local roads, deep large diameter drainage, utility installations, site clearance, tunnel works (Dublin Port Tunnel), commercial/industrial/residential development works, landfill facilities, major earthworks (2008/09 over 3 million cubic metres), rock breaking & processing of subsequent materials for re-use, recycling, quarry works, demolition, coastal defence works, tidal works, hospitals, design and construction of water attenuation systems and plant hire.

We have all the necessary plant equipment and personnel (including contracts managers, safety personnel, engineers, land surveyors etc) to

undertake such works and can support our operations internally with a highly experienced head office management team.

All on-going plant maintenance, testing and up-keep is carried out by our highly skilled mechanical engineers to ensure all plant and equipment is maintained to the highest standards. The aim of this department ensures a first class and continuously improving service to all sites and customers.

Shannon Valley is also registered with Enterprise Ireland and ISME organisations.



An integrated Quality Management System is being implemented with a view to achieving ISO9001:2008 Certification.

Typical works are further described within the document.

HEAD OFFICE

2006 saw the completion of the construction of our head office. The construction included 11 other mixed retail, office & industrial buildings over an area of 20,000m². Shannon Valley constructed the buildings from ground to roof level. Our office contains a 4 storey block giving us the capability to house all necessary functions of running the business, including car parks, plant maintenance yard & truck parking area of 4,000m², administration, meeting rooms, engineering and surveying department, health & safety department and commercial department (contact details contained in Summary Section).



HEALTH & SAFETY AND ENVIRONMENT

From company directors to the on-site workforce, Health and Safety of all employees and third parties is treated with paramount importance and is vital to our daily operations and ensuring a safe place of work. This is reflected within the company Health and Safety Statement and our full compliance with all current Health and Safety Legislation.

Each project is addressed individually at the time of award and strict procedures are put in place to ensure site specific Method Statements, Risk Assessments, Safe Plan of Action (SPA), Inductions, Plant Certificates and Operative Training Certificates etc. form part of the Safety File.

All operatives are fully certified, trained, experienced and Safe Pass card holders. Our in-house Health & Safety Department ensures continuing development of all employees is undertaken in terms of training and communication of standards.

As one of Ireland's top safety conscious organisations we are proud to note we have received the **Construction Award of Distinction** from the **National Irish Safety Organisation**.

Shannon Valley is also committed to full compliance with environmental legislation and good work practice. This is confirmed by virtue of the company's Environmental Policy Statement. This document recognises that good management ensures environmental protection and prevention of pollution in its decisions, policies and practices.



PLANT

Our plant capability consists of over 300 items of plant including:

- 85 Excavators ranging from 1.5t – 100t including 10 long reach excavators, 15 rubber tyre excavators and 5 back hoe loaders (adapted for marine works as required)
- 45 Rock breakers up to 10 tonne (adapted for marine works as required)
- 2 road graders with ATS
- 50 Road tipper trucks, 5 low loaders and 3 Grab & Hi-ab Lorries
- 50 Trench Boxes
- 20 Drag Boxes
- 15 Dump trucks up to 40t capacity (adapted for marine works as required)
- 10 dozers with dual grade GPS technology,
- 8 Tractors plus attachments (trailers, bowsers etc.)
- 20 vibrating rollers
- 3 Static Compactors
- 6 Road Cleaning Units
- 2 Wheel wash Units
- 1 Dust Suppression Unit
- 1 "Dust Boss" Dust Control Unit
- 5 Crushing buckets (currently largest in Ireland)
- 3 Rock crusher plant and associated loading shovels
- 4 Screening plant and associated loading equipment
- 5 Brush cutters
- 2 Drag Line excavators
- 2 50t Mobile Cranes
- 1 Drainage CCTV Camera & Jetting Unit
- 5 Mobile Maintenance Units

Large stock of de-watering pumps, compaction equipment, temporary accommodation, welfare facilities, small tools and equipment etc.

CLIENTS

We have undertaken works for many large clients and our reputation speaks for itself, resulting in repeat business. Blue chip clients and developers we have carried out works for include the following:

- M50 D& C Ltd (Consortium of Fomento De Construcciones Y Contratas, S.A., Sacyr Vallehermoso (SYV) Group, PJ Hegarty)
- National Roads Authority (Ireland)
- Health Service Executive (Ireland)
- Hewlett Packard
- Intel
- Various Local Government Authorities
- Laing O'Rourke
- Sisk
- Ascon (Now trading as BAM)
- Rohcon (Now trading as BAM)
- Siac
- Michael McNamara & Co. Ltd.
- Gama
- Greenstar
- Lagan International
- John Paul Construction
- Bennett Construction
- P. Elliott
- Somague, Bowen, Sacyr JV
- Nishimatsu / Mowlem / Irishenco JV

REFERENCES

Below are contact details of clients from whom references may be obtained for the works we undertake ranging up to and in excess of €30m.

CLIENT	PROJECTS	CONTACT NAME	CONTACT NUMBER
M50 D&C	M50 Motorway	Tony Finlay	+353 (0)87 915 2601
Laing O'Rourke	Manor Mills Town Centre Development & Athlone Town Centre Pipeline	Tim McDermott	+353 (0)87 798 0109
Siac	Ballygannon Coastal Defence Works & Julianstown Borrow Pit Reinstatement	Michael Durkan	+353 (0)1 403 3111
John Paul Construction	Profile Park Roads Infrastructure & Ballynagran Landfill Facility	Tony McDonald	+353 (0)1 215 6100
Sisk	Santry Business Park	Victor O'Shea	+353 (0)86 273 0560
Michael McNamara	Dublin City Centre Digges Lane Development	Liam Jennings	+353 (0)87 120 2754
Kildare County Council	Several developments within the Kildare Region	Sean Leahy	+353 (0)87 806 1151
Lynam La Vista	Several developments throughout Meath & Leinster Region	Gerald Griffin	+353 (0)86 813 2719

PROJECTS

Shannon Valley has gained a vast level of experience since establishing its business, ranging from minor works to major road infrastructure.

Typical works include:

- Bulk Excavations
- Rock Breaking
- Rock Processing
- Site Clearance
- Material Recycling / Tree Shredding
- Material Screening
- Marine Works
- Bulk Haulage
- Landfill Facilities
- Quarry Works
- Drainage
- Service Utilities
- Demolition
- Dredging
- Transport & Logistics

Herein is a selection of current & past completed projects providing an indication of the range and scope of works undertaken by Shannon Valley.

Shannon Valley



Shannon Valley



Shannon Valley



M50 & M1 MOTORWAY RECONSTRUCTION

Co. Dublin

The project consists of reconstruction and upgrade of 28km of motorway, 8 intersections/ fly-over's and associated national roads. All works were carried out while maintaining 4 lanes of live traffic on the mainline and 2 lanes elsewhere. This motorway is the ring road surrounding Dublin City Centre and therefore time and programme constraints were critical. Works to form the new 8 lane motorway consisted of 100ha. of site clearance, bulk excavations in excess of 1million cubic metres, filling of the same quantity of suitable material to form new roads and embankments, placing of capping and sub base for new roads 150,000m³, recycling rock and concrete 200,000t, breaking rock 100,000m³, 28km of drainage & utilities, disposal off-site to licensed tipping facilities for unsuitable material in excess of 125,000m³.

Prior to construction



M50 Mainline Works



M50 Interchange works using road graders with ATS



Drainage 7m deep in Rock



M1 Airport Junction



M1 / M50 Interchange

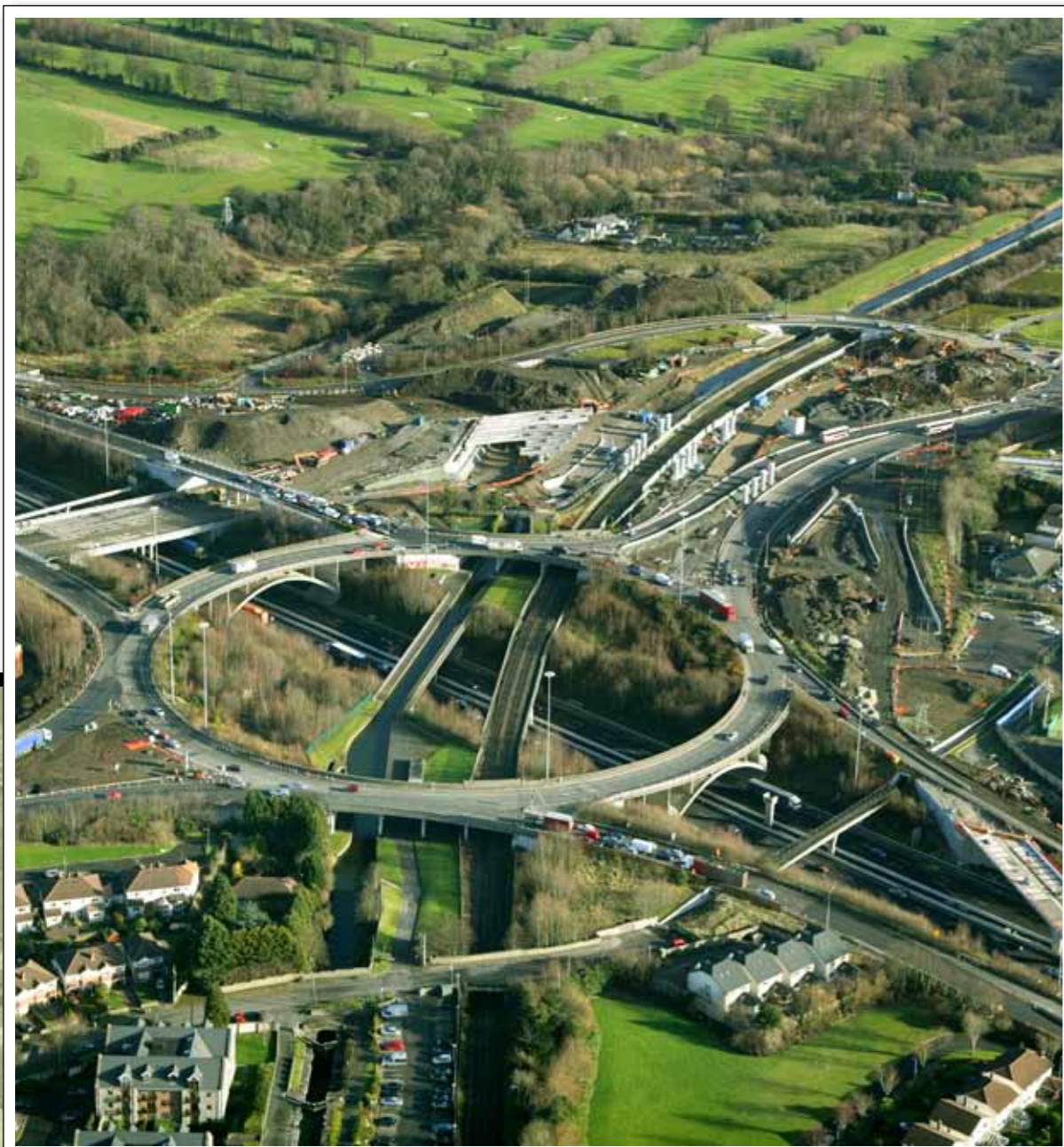
M1 AIRPORT INTERCHANGE TO DUBLIN PORT TUNNEL MOTORWAY RECONSTRUCTION

Co. Dublin

Reconstruction of approximately 2.5km of live motorway. The works included site clearance, removal of existing drainage & services and upgrade and renewal of same. The works included full construction in the verges and central median forming 2 new running lanes for traffic. It also included the construction of 4 large attenuation ponds for storm water management. Access and working areas were restricted due to the continuous live traffic; safety was of paramount importance utilising best practice traffic management operations to allow the safe movement of operatives, plant and the significant amount of lorries in and out of the site during the bulk operations.

N3 INTERCHANGE

Co. Dublin



MATER HOSPITAL

Dublin City Centre

This project included the site clearance and demolition of various structures including - substations, a 35m high tower using long reach demolition equipment, service yards, car parks and boundary walls, all within the confines of an existing hospital and within close proximity to residential buildings. Disease prevention was a significant factor and specialist dust suppression equipment had to be utilised. There was also the excavation of a basement within piled walls of 100,000m³ and subsequent removal off site. Contaminated ground was an issue and control measures were taken to segregate and dispose to appropriate landfill facilities. In addition was the construction of roads, car parks, service areas, retaining walls – all while maintaining access for a major city centre working hospital.



SILVER SWAN HOTEL

Sligo

Phase 1 involved the breaking & extracting of approximately 10,000m³ of rock within a piled cofferdam, adjacent to a river and a live road on opposite sides, existing building on one end and a constructed steel structure on piles at the other end. This busy town centre project involved numerous complications associated with water, existing roads, structures and extreme rock strength. The second phase involved the Cardox method removal of 5,000m³ of rock beneath the already constructed steel structure of the building and between piles with minimal height working space. Due to the highly experienced management and advanced plant capabilities within Shannon Valley's organisation the project was completed to programme to the clients satisfaction.



PROFILE PARK

Lucan, Co. Dublin

Project consists of the construction of infrastructure dual carriageway roads for a new 800,000m² business park – works included bulk excavation and filling, re-use of materials using soil stabilisation methods, roads construction, over 16km drainage in rock, and 21km services & utilities, culverts to permanently re-divert existing watercourses. Shannon Valley previously completed the site opposite, Cuisine de France.



GAIETY CENTRE

Dublin City Centre

Project consists of the construction of a 2 storey underground carpark in the centre of Dublin City part bounded by a pedestrian zoned area. The excavations were carried out in a concrete pile perimeter exceeding 15m deep in rock. Difficulties were encountered and overcome due to the restricted access and despite this we were able to achieve the removal of over 160 loads a day from site. Once near formation long reach excavators were brought to site to remove the final layers. Particular care had to be taken in controlling water during the course of the works as the water table level was only 3m below ground level. Anti-flotation measures were taken to ensure the integrity of the structure. Programme was reduced by 2 weeks.



BURLINGTON ROAD OFFICE DEVELOPMENT

Dublin City Centre

Project consists of the construction of a 2 storey underground carpark in the centre of Dublin City part bounded by existing roads and bank buildings. The excavations were carried out in a concrete pile perimeter exceeding 15m deep in rock. Over 80,000m³ of excavations and disposal to off-site licensed tipping facilities together with 30,000m³ of rock was undertaken. Due to the high water table level particular care had to be taken in controlling water during the course of the works.



SANTRY BUSINESS PARK

Dublin City

Project consists of the construction of a basement excavation approx 30,000m³ for a multi-storey office development, associated roads, car parks, drainage, services etc. Works included fine grading to levels for the basement, design and installation of temporary works and support of live mains and logistic controls due to poor ground conditions.



TOWN CENTRE RETAIL DEVELOPMENT

Co. Mayo

Project consists of the construction of a cut, from a rock hill of over 50,000m³ for a major retail development. The site was spread over 70,000m² and site clearance of the forested site was the initial operation. Once bulk excavations were undertaken the subsoil was separated and removed off-site. The rock was then processed to be used as a capping and subbase for all the associated roads and car parks constructed subsequently. All drainage and services were undertaken through rock.



HOUSING DEVELOPMENT

Co. Meath

This project is a typical example of a development that Shannon Valley has undertaken for over 4,000 houses in the Leinster region. The construction in this case was for the 3rd phase of the development consisting of 220 houses. The works involve all works from a green field site to sub floor level of units, including roads, attenuation tanks, site drainage and utilities installations.



BOYNE BRIDGE BUSINESS PARK

Co. Louth

This project is for the infrastructure of a 160,000m² business park. Roads were constructed utilising designed geogrid material to stabilise the poor ground conditions. Materials excavated were then segregated and recycled to create suitable fill for backfill to the drainage trenches that were as deep as 6.5m. Water control was a big factor due to the lie of the adjacent land. The works tied into three existing live roads and involved trenchless technology to bring services below the same road. All street lighting, electricity supply ducts, gas, water main, telecommunications ducts etc were installed. Due to the prestige of this project, quality finish and programme constraints were of utmost importance and all achieved in accordance with the clients' requirements.



AFRICAN SAVANNAH PARK

Dublin Zoo

This project included the construction of a habitat for animals such as rhinos, zebras and giraffes over an area of 30,000m². The works involved bulk excavations, filling to form mounds and features, placing of rock boulders, disposal of material off-site to licensed landfill facilities, gabion retaining walls, underpass culverts for the movement of animals between different locations, import of high grade sand from Co. Wicklow and all associated drainage and ducting.



BALLYNAGRAN RESIDUAL LANDFILL FACILITY

Co. Wicklow

This project is for the construction of cells and raising of embankments for future landfill requirements of Greenstar Recycling Holdings Ltd over an area of 1.2million m². The works involve significant de-watering and ground control measures including the construction of over 12km of drainage and leachate collection and extraction fusion welded pipework. Earthworks include over 350,000m³ of excavation, on site haulage and filling to precise tolerances utilising GPS Technology.



Rock extraction and haul road construction



Bulk excavations and haulage



Filling, levelling and compaction of embankments

BALLYGANNON COASTAL DEFENCE WORKS

Co. Wicklow

This project included site clearance over a coastal area of 50,000m². Bulk excavations took place to form a new profile of coastal embankment to allow the placing of rock armour imported by sea. The rock was tipped off a ship and recovered using excavators and dump trucks. Rock was placed in layers from 25mm stone to 15 tonne boulders - over 80,000 tonne in total.



Recovering rock from the sea



Rock imported by sea and recovered using 60t, long reach excavators



Finished profile

RATHMINES MIXED USE DEVELOPMENT

Dublin City

This project included the site clearance and demolition of various car parks and an existing swimming pool. A basement was then formed, rock was broken and excavated over various levels. Associated works also included temporary works, drainage and utility installations.



MANOR MILLS TOWN CENTRE DEVELOPMENT

Co. Kildare

Project consists of the construction of an underground basement carpark for a major new town centre retail and office development. The works involved the extraction of over 70,000m³ of rock and 60,000m³ of clay in 10 weeks of a 15 week programme. The site was restricted in terms of areas available and a busy town centre trafficked area. Despite this up to 300 loads of material were removed from site to licensed tips on a daily basis. Rock from the excavations was processed and was recycled for use for permanent construction of the structures.



ROONAGH PIER

Co. Mayo

Project consists of the construction of a new pier which was formed using recycled and imported rock armour. Plant was utilised by extracting large boulders up to 10t individual weights from the Atlantic Ocean while working around the constraints imposed by tides. Rocks were used to create an armour for protection of the new pier.



DEMOLITION PROFILE

Mater Hospital Enabling Works Contract

Demolition of Existing Energy Centre associated basement, 35m high chimney adjacent residential properties, existing Service Tunnels. ESB Substation & Switch Room, Service Yard and slabs, underground oil tanks, Boundary Walls, Nurses Home and asbestos removal. Special measures for the control and prevention of Asperagillus. This contract incorporated the use of the "Dust Boss" - the first of its type in Ireland.



Carnlough Road, Cabra, Dublin

Demolition of Industrial Cement Silos and associated carparks, services etc, Bulk excavation, site clearance.



Rathmines Swimming Pool

Demolition of existing swimming pool building and associated structures, asbestos removal, carparks, paving, public lighting, underground services, diversions and reconnection to existing services, bulk excavation over a 2 acre site.



Sheiling Hotel Raheny, Dublin

Demolition of hotel incorporating underground basement over an area of 1,500m² and max height 10m, design of temporary propping system, retaining 20m x 10m high façade. Bulk excavation and disposal of all off-site.



Robin Hill, Dundrum, Dublin 16

Demolition and removal off site of 4 houses and associated outbuildings, including asbestos removal, bulk excavations, rock breaking and removal off-site.



Ballsbridge Apartment Blocks

Demolition and removal off-site of 2x3 storey apartment blocks adjacent to live road and surrounding carparks.

North Strand Cinema, Dublin

Demolition of former cinema over an area of 3,500m² and max height 21m, retaining 22m x 15m high façade while maintaining a 1.5m footpath and 1m cycle track adjacent and beneath propping system alongside major city centre road. Approximately 1400m² of asbestos roofing & associated guttering & down pipes. Bulk excavation and disposal of all off-site.



SUMMARY

Shannon Valley prides itself on its wealth of experience, knowledge and understanding of the construction industry and its role therein. It is this role that has resulted in the growth of the company and its strong standing and respect from the clients who have had the benefit of Shannon Valley working on their project.

The company ethos has transpired from the fact that clients repeatedly return and negotiate much of the works with the confidence and knowledge that Shannon Valley has the capability to undertake projects achieving all quality, time and budget constraints. Further schemes have been awarded on the basis of the reputation that Shannon Valley has maintained in the industry.

The highly professional approach to business and day to day management of projects and a hands-on approach from Directorship level down ensures that our excellent reputation is maintained.

Below are our contact details. We are accessible 7 days a week should any further questions or details be required on the company on past and future projects.

We look forward to hearing from you.

Regards

Kevin McHugh

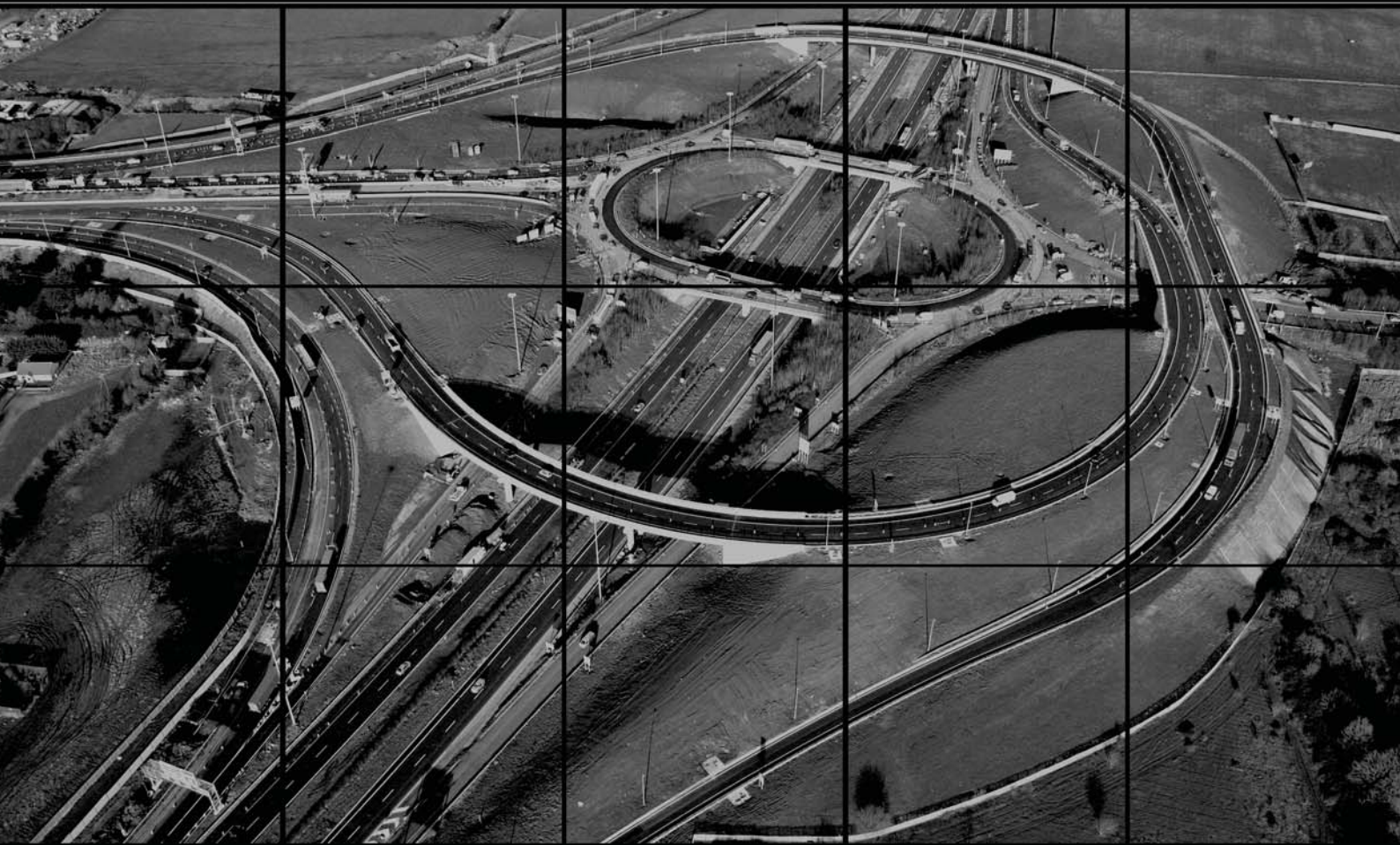
Kevin McHugh,
Commercial & Business Development Manager

Directors: Michael English, David English, Dermot English

Shannon Valley Plant & Civil Engineering



Shannon Valley



SHANNON VALLEY PLANT & CIVIL ENGINEERING